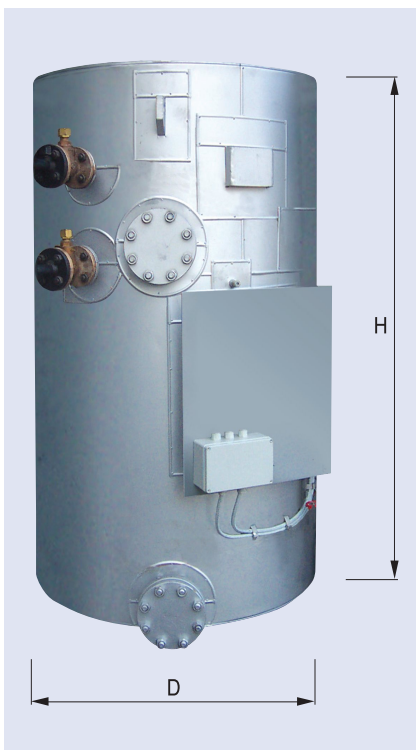


MARINE AUXILIARY BOILER

MS-TYPE (CYLINDRICAL)



Dimension table

Type	Steam Capacity (ton/hr)	Working Pressure (kg/cm ²)	Dimension (mm)		Dry Weight (ton)
			D	H	
PA 01	0.5	7.0	1,142	1,900	2.2
PA 02	1.0	7.0	1,405	2,305	3.5

1. Dimension : Boiler body(Excluding insulation)
2. Dry weight : Boiler body(Excluding water)
3. Working pressure : According to requirement.

